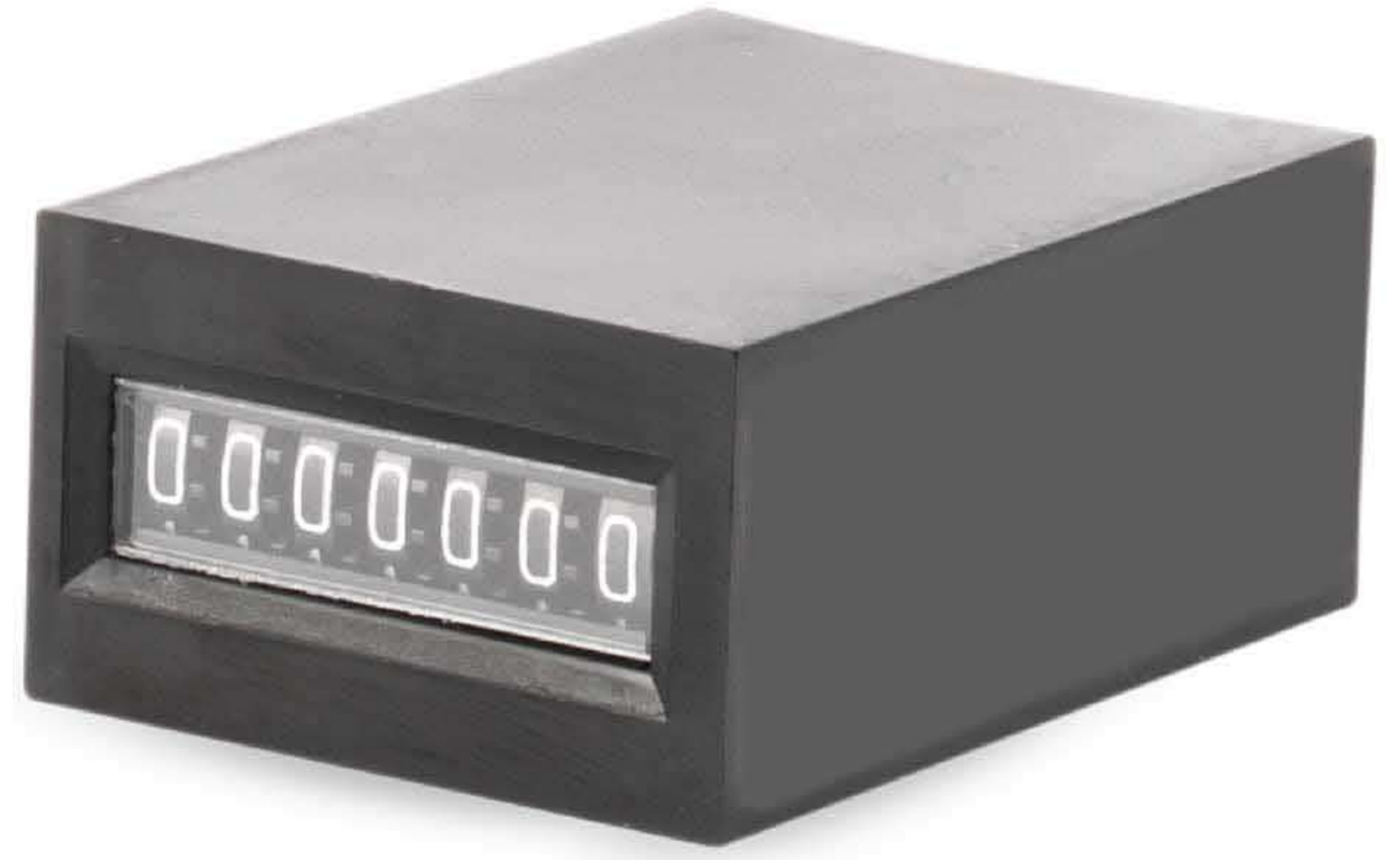


IMPULSE COUNTER SERIES CR-18

SALIENT FEATURES

- 7-digit Compact Size.
- High Accuracy and Reliability.
- Requires no lubrication or maintenance.
- Ideal where space is limitation.
- Mounting options: Panel, PCB.

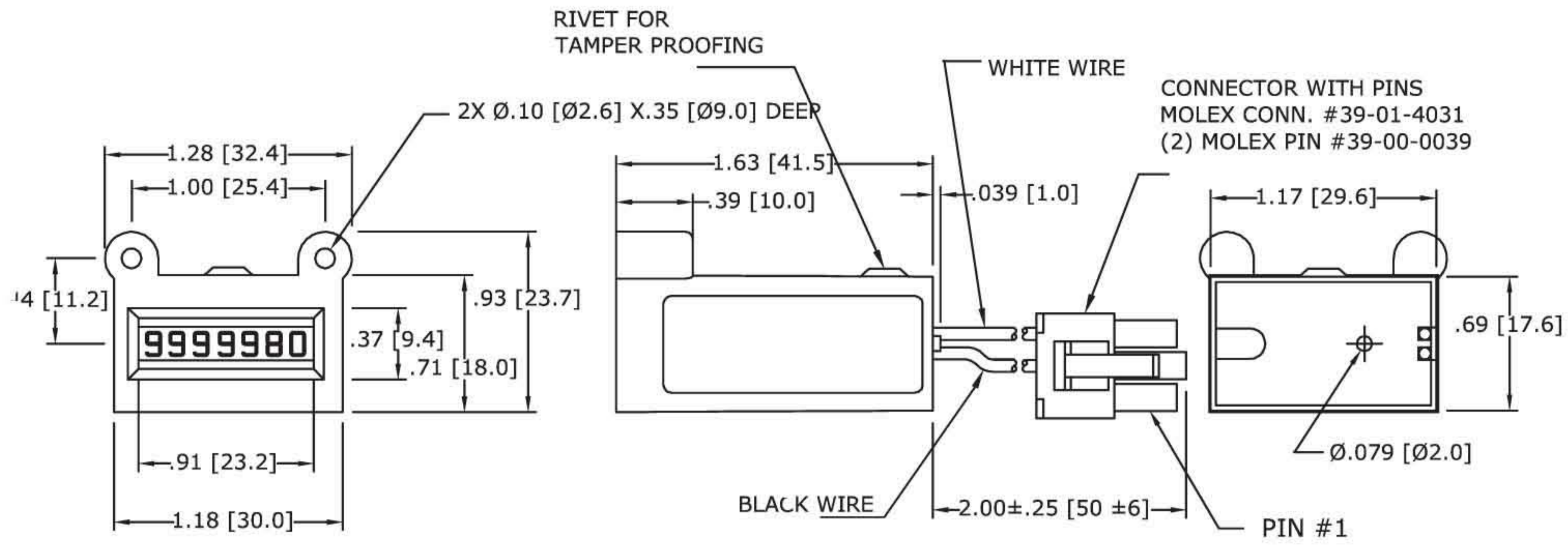


GENERAL SPECIFICATIONS

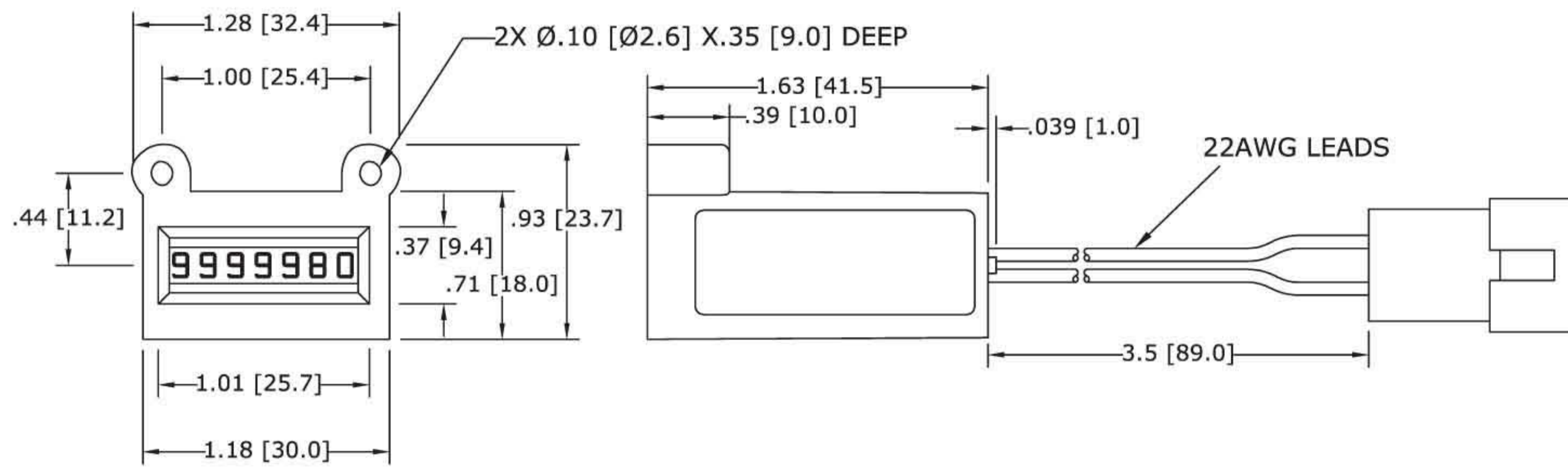
Supply Voltage	12 V DC & 24 DC
Supply Variation	-15% to +10% & ±10%
Power Consumption (Max.)	1.2 W
Figure	7 Digit, Black, 4.0 mm Height
Maximum Range	99,99,999
Operating Life	10,000,000 counts minimum
Speed (Counts / Minute)	600 (50ms-ON / 50ms-OFF) & 1200 (25ms-ON / 25ms-OFF)
Pulse Width (minimum)	50 ms & 25 ms
Connection	Lead wire with connector, Terminal PIN, & Lead wire
Protection for Housing	Tamper Proof housing
Weight (unpacked)	142 g
Operating Temperature	-5 C to +40 C (Non-Freezing)
Humidity (Non Condensing)	45 to 85% (Rh)
Display	0.12'(3.0) x 0.06' (1.6) - White & black background
Continuous Energizing	Permissible
Counting Method	One pulse - One count (energizing - ½ count, unenergized - ½ count)
Reset	None
Shock test	Endurance: 300 m/s ² (30g) XYZ 5 times each direction, Total : 3, Mismovement :50 m/s ² (5g) XYZ 4 times each direction, Total : 24.
Vibrations test	Endurance: 16.7 Hz, Width : 4mm ; XYZ each direction for 1 hour Mismovement :10~55 Hz, Width : 0.5mm ; XYZ each direction for 10 mins
Type of Mounting	Behind the panel (Screw mount), PCB mount (Straight), PCB mount(Right angle) & Panel (Snap-in type)
Degree of Protection	IP 30
Construction	Cover : Plastic (Noryl UL94V-1), Black

MOUNTING DIMENSIONS (mm)

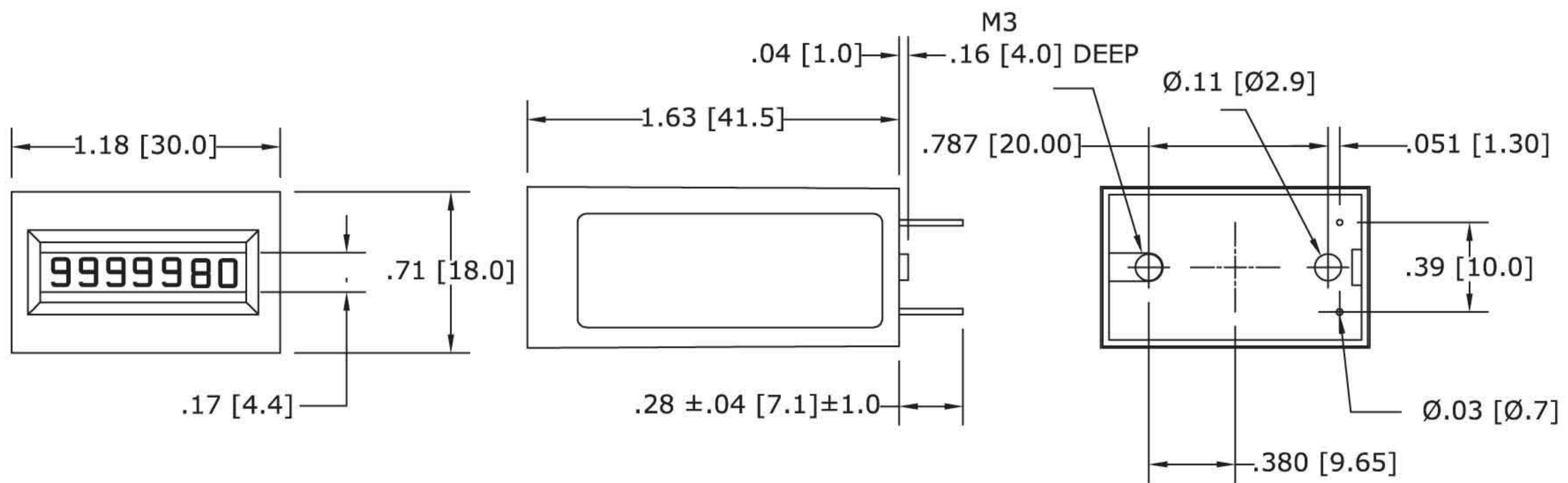
BEHIND THE PANEL (SCREW MOUNT):



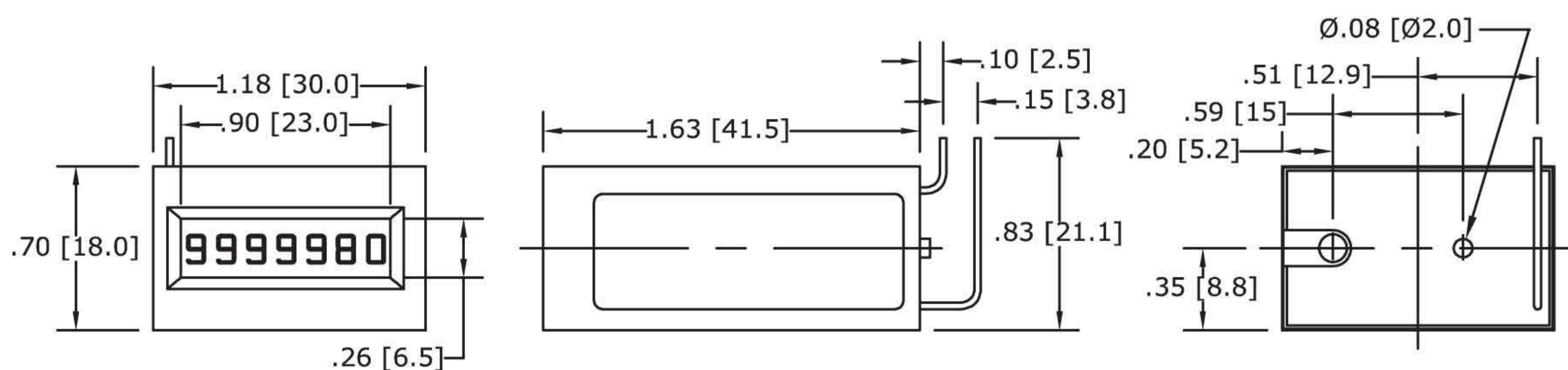
BEHIND THE PANEL (SCREW MOUNT):



PCB MOUNT (STRAIGHT):

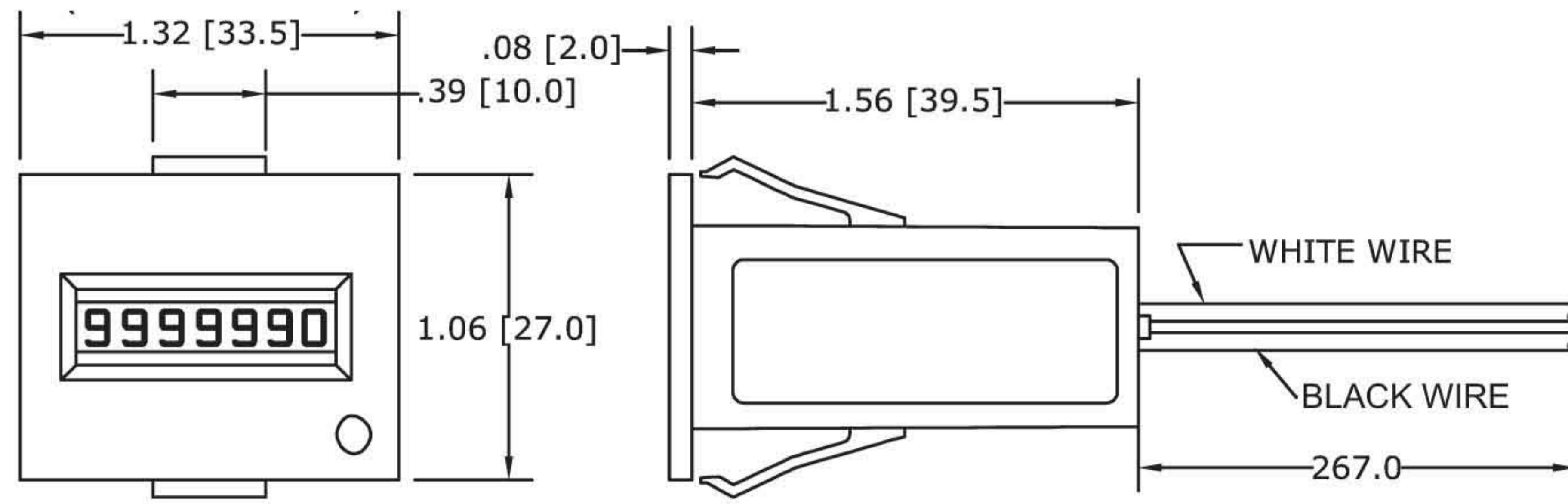


PCB MOUNT (RIGHT ANGLE):



MOUNTING DIMENSIONS (mm)

PANEL (SNAP-IN TYPE):



VIEWS OF DIFFERENT BEZELS



Behind the panel (Screw mount)



Housing Behind Panel with Out Seal Hole (Screw mount)



PCB mount (Straight)



PCB mount (Right angle)



Panel (Snap-in type)