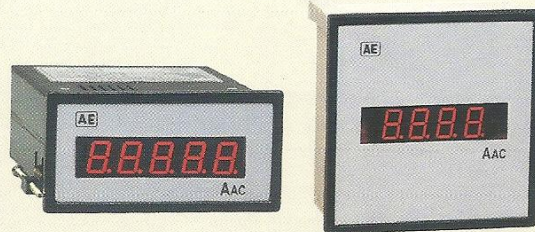




Digital Panel Meter

Instrument
Division

Data sheet No. : DPM/10/14



DESCRIPTION

Digital Panel Meter operates on the principle of dual slope integration. It is available in two types i.e. 3½ digit & 4½ digit. Digital frequency meter incorporates microcontroller with crystal oscillator to display the frequency. It is available in 4 digit type.

FEATURES

- ◆ Low cost.
- ◆ Seven segment red & green colour LED display with 0.5" & 1" size.
- ◆ AC current input is incorporated with built-in CT of 1Amp or 5Amp for isolation.
- ◆ High accuracy.
- ◆ AC / DC signal measurement

ELECTRICAL SPECIFICATIONS

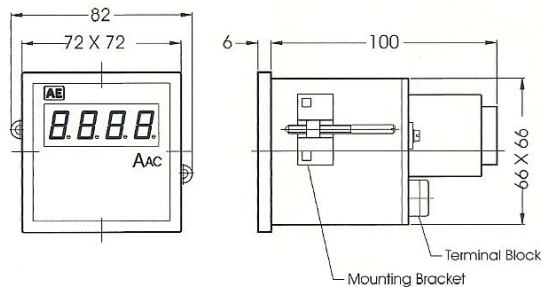
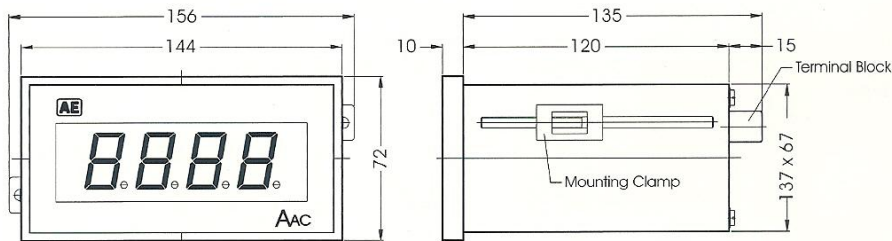
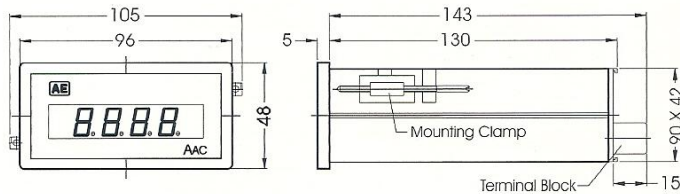
Parameters	Type		
	Digital panel meter 3½ digit	4½ digit	Digital frequency meter 4 digit
Mounting	Panel	Panel	Panel
Operating voltage	650V AC	650 V AC	600 V AC
	700V DC	700V DC	—
Operating current AC (with internal CT) DC (with internal Shunt)	1A / 5A	1A / 5A	—
	5A	5A	—
Frequency	40 – 400Hz.	40 – 400Hz.	40Hz–400Hz
Resolution	0.001 to 1 count depending upon measuring range	0.0001 to 1 count depending upon measuring range	Depending upon measuring range
Accuracy	0.5% of f.s.d. ± 2 Digits		0.2% of reading ± 2 Digits.
Auxiliary Supply	63.5V / 110V / 240V AC ±10%		63.5V / 110V / 240V AC ±10%
VA Burden for Aux. supply	Less than 4VA		Less than 4VA
Input impedance for voltage	1MΩ		1MΩ
VA Burden Current Voltage	0.5VA 1VA		— 1VA
	Greater than 20M ohms at 500V DC		Greater than 20M ohms at 500V DC
Dielectric test	2kV RMS for 1 minute.		2kV RMS for 1 minute.
Operating temperature	0°C to 55°C		0°C to 55°C
Storage temperature	-20° to 70°C		-20° to 70°C
Humidity	Upto 95% RH		Upto 95% RH
Sampling rate	3 samples/sec.		3 samples/sec.
Over range indication	MSD indication 1" & all other digits blank. Polarity sign is preserved.	All digits blinking with "0" indication & polarity sign is preserved.	—
Protection	IP20		IP20
Maximum indication	1999	19999	—



Digital Panel Meter

Instrument
Division

MECHANICAL SPECIFICATIONS



MODEL	A1	A2	A3	A4	A5
SIZE (mm)	48 x 96 x 115	96 x 96 x 70	72 X 72 X 100	72 x 144 x 130	144 x 144 x 91
PANEL CUTOUT (mm)	45 ^{+0.6} x 92 ^{+0.7}	92 x 92 ^{+0.8}	68 X 68 ^{+0.7}	68 ^{+0.7} x 138 ^{+1.0}	138 x 138 ^{+1.0}
WEIGHT (Approx. gms)	520	500	400	1100	600

Note:

- ◆ Active, reactive & apparent power indicators are to be used with external transducer.
- ◆ For AC current measurement above 5Amp, external CT is to be used.
- ◆ For DC current measurement above 5Amp external shunt is to be used.

Ordering information

- 1) Type
- 2) Model
- 3) Measuring Range
- 4) Display height & colour
- 5) Auxilliary supply
- 6) Resolution